

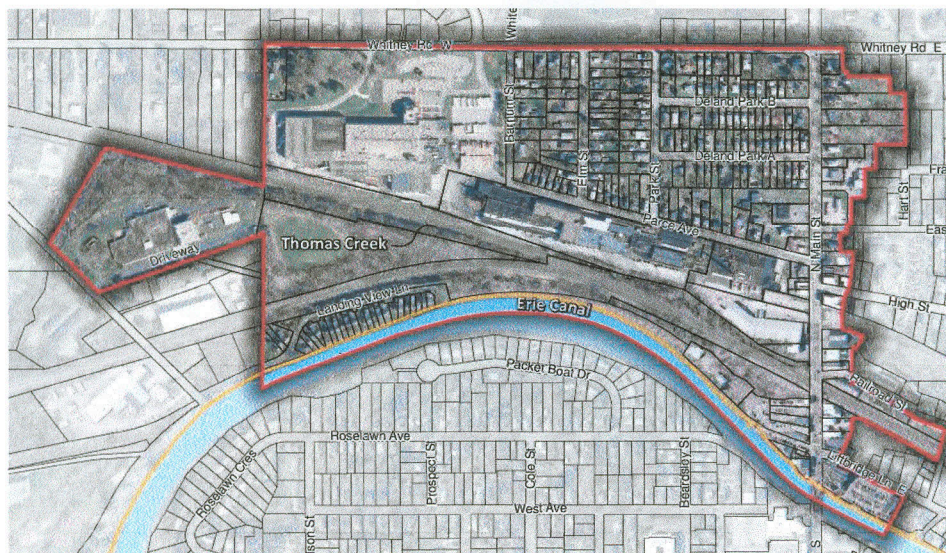
# Village of Fairport NW Quadrant Master Plan

## Project Overview

The Village of Fairport has completed several planning initiatives in recent years, including the completion of a Comprehensive Plan (200X) and a Circulation, Access and Parking Study (200X). These planning efforts identified the need to prepare a focused, area specific strategy to guide future development in the northwest quadrant of the Village. The quadrant historically functioned as an employment center for the Village, resulting in a range of land uses unique to the community. Today, this area remains an important employment center although it is in a state of transition. The area specific master plan will identify opportunities to capitalize on neighborhood assets, while also overcoming obstacles impacting growth potential and the quality-of-life of residents.

The study area encompasses a full array of land uses, ranging from active industrial and distribution uses to small scale commercial uses and residential neighborhoods. The master plan seeks to enhance the function and stability of uses expected to have a long term presence in the community, identify a vision for areas in transition and identify enhancement projects for areas where existing uses are expected to remain consistent in the foreseeable future. As a result of the planning process, the Village will identify mitigation strategies to address land use conflicts and other issues identified by residents and property owners within the study area. The master plan will provide clear direction for targeting future development opportunities, public monies, and capital projects over the course of the next 2 to 20 years.

## Study Area



*The study area is roughly bounded by the Erie Canal to the south, properties fronting Main Street to the east, Whitney Road to the north and the LiDestri Food site and Corning Tropel to the west.*

**FOR ADDITIONAL INFORMATION ON THIS PLANNING EFFORT, PLEASE CONTACT KAL WYSOKOWSKI, EXECUTIVE DIRECTOR AT 421-3240 or [kal@fairportny.com](mailto:kal@fairportny.com).**